

## General Series

General Series Valve Regulated Lead Acid batteries are designed with AGM (Absorbent Glass Mat) technology, high performance plates and electrolyte to gain extra power output for common power backup system applications widely used in the field of UPS, Emergency Lighting System.

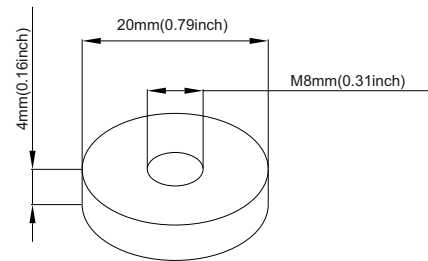
## Application

- |                         |                        |
|-------------------------|------------------------|
| Alarm System            | Medical Equipment      |
| Cable Television        | UPS                    |
| Communication Equipment | Power tools            |
| Control Equipment       | Emergency Power System |
| Security System         | Toys                   |



## General Features

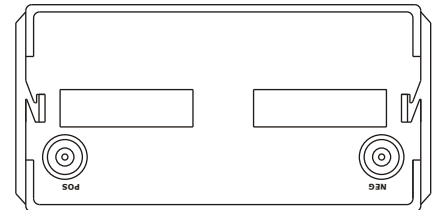
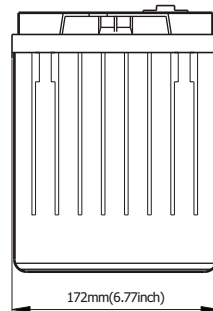
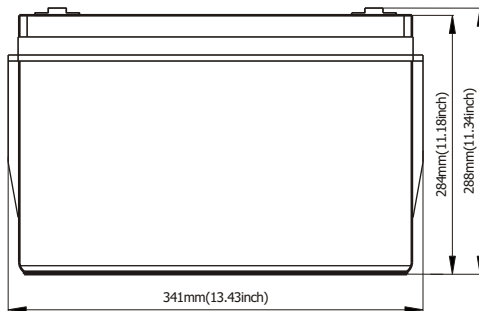
- Sealed and maintenance free operation.
- Non-Spillable construction design.
- ABS containers and covers(UL94HB, UL94V-0) optional.
- Safety valve installation for explosion proof.
- High quality and high reliability.
- Exceptional deep discharge recovery performance.
- Low self discharge characteristic.
- Flexibility design for multiple install positions.



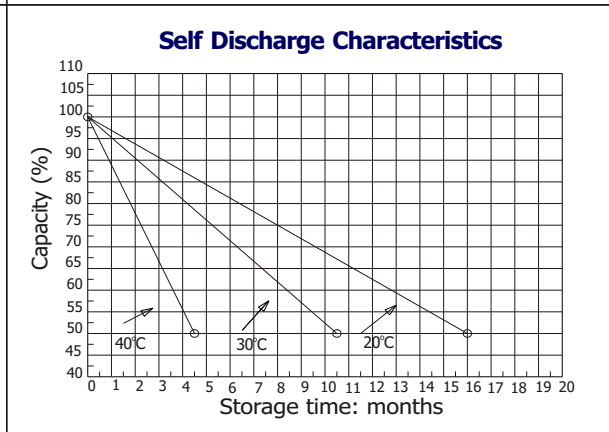
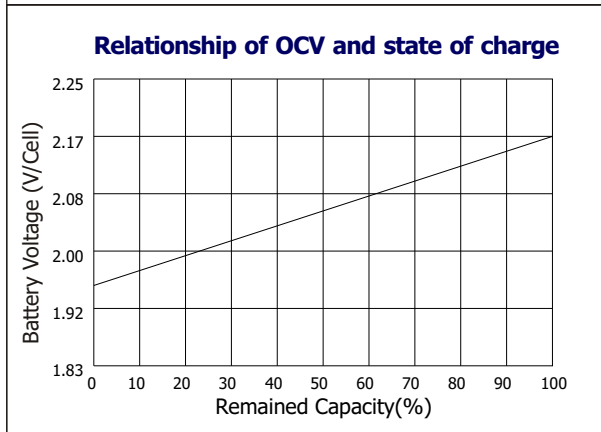
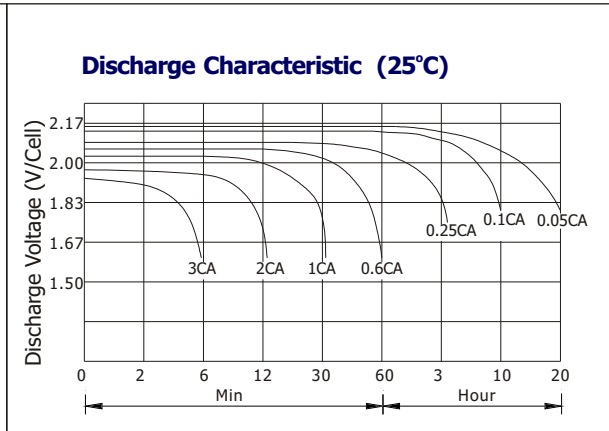
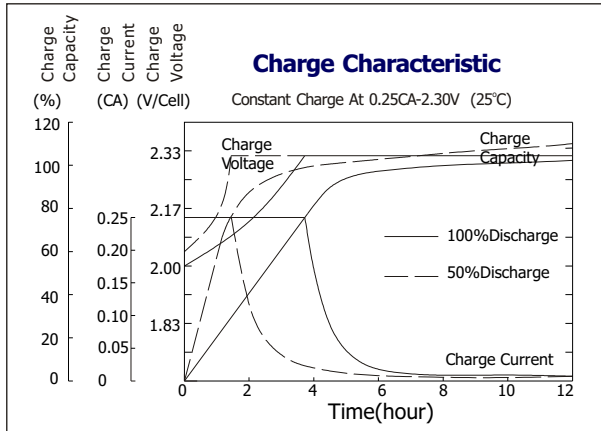
## Construction

- |                 |              |                    |               |
|-----------------|--------------|--------------------|---------------|
| Component ..... | Raw material | Sealant .....      | Epoxy Resin   |
| Positive .....  | Lead dioxide | Safety valve ..... | EPDR          |
| Negative .....  | Lead         | Terminal .....     | Copper        |
| Container ..... | ABS          | Separator .....    | Fiber glass   |
| Cover .....     | ABS          | Electrolyte .....  | Sulfuric acid |

## Terminal Dimensions



Battery Model	GB-12-135			
Designed Floating Life	8 Years			
Capacity(25°C)	20HR(6.8A,1.75V)	10HR(13.4A,1.75V)	5HR(22.8A,1.75V)	1HR(81A,1.75V)
	136AH	135AH	114AH	81AH
Dimensions	Length	Width	Height	Total Height
	341mm(13.43inch)	172mm(6.77inch)	284mm(11.18inch)	288mm(11.34inch)
Approx. Weight	44Kg (97.02 lbs)			
Internal Resistance	Full charged at 25°C: 0.005 Ohm			
Self Discharge	3% of capacity declined per month at (25°C)			
Capacity Affected by Temp.(20HR)	40°C	25°C	0°C	-15°C
	102%	100%	85%	65%
Charge Voltage(25°C)	Cycle use		Float use	
	14.4-15V(-30mV/ °C), max. Current: 33.5A		13.6-13.8V(-20mV/ °C)	



### Constant current discharge ratings-amperes at 25°C

F.V/Time	5MIN	10MIN	15MIN	30MIN	1HR	3HR	5HR	10HR	20HR
1.60V	469	322	235	141	88.4	36.6	25.6	14.2	7.06
1.67V	422	293	228	137	88.3	36.4	25.4	14.0	7.04
1.70V	401	283	220	134	88.0	36.4	25.4	13.9	7.04
1.75V	356	261	208	131	87.1	36.2	25.2	13.6	7.00
1.80V	322	243	198	127	86.0	36.0	24.9	13.4	6.76
1.85V	244	200	172	117	85.1	35.9	24.7	13.2	6.35

### Constant power discharge ratings-watts at 25°C

F.V/Time	5MIN	10MIN	15MIN	30MIN	1HR	3HR	5HR	10HR	20HR
1.60V	773	533	415	265	174	70.2	48.9	28.4	14.1
1.67V	733	527	411	260	168	70.2	48.9	28.0	14.1
1.70V	685	513	405	253	164	70.2	48.9	27.8	14.1
1.75V	638	480	381	247	163	69.1	48.4	27.3	14.0
1.80V	572	446	358	240	160	68.2	47.6	26.8	13.5
1.85V	458	370	312	220	158	67.9	46.9	26.3	12.7

